

## Community Health Needs Assessment- Davie Medical Center

### I. Introduction

Davie Medical Center (DMC) is a not-for-profit hospital facility and is part of Wake Forest Baptist Health (Medical Center). As part of Wake Forest Baptist Health, Davie Medical Center has the resources of a nationally recognized academic medical center at its doorstep, enabling the facility to offer world-class health care, close to home. In 2017, Davie Medical Center closed its 81 bed hospital in Mocksville and opened a new, state of the art, 50 bed inpatient hospital that includes a 24/7 emergency room and an Acute Care for Elders (ACE) unit on its Bermuda Run Campus. Davie Medical Center provides clinical services at its Bermuda Run Campus in both Medical Plaza One and Medical Plaza Two that includes: cardiology, ophthalmology, gastroenterology, neurology, orthopaedics, pulmonary, podiatry, neurosurgery, sleep lab, imaging, physical therapy, occupational therapy, endoscopy, lab and pharmacy. Finally, the Medical Center operates Urgent Care – Mocksville that treats minor illnesses and injuries seven days a week and requires no appointment.

### Mission

As part of Wake Forest Baptist Health, DMC's mission is to improve the health of our region, state and nation by:

- Generating and translating knowledge to prevent, diagnose and treat disease.
- Training leaders in health care and biomedical science.
- Serving as the premier health system in our region, with specific centers of excellence recognized as national and international care destinations.

### Vision

As part of Wake Forest Baptist Health, DMC's vision is a preeminent learning health system that promotes better health for all through collaboration, excellence and innovation.

## II. Purpose of Community Health Needs Assessment (CHNA)

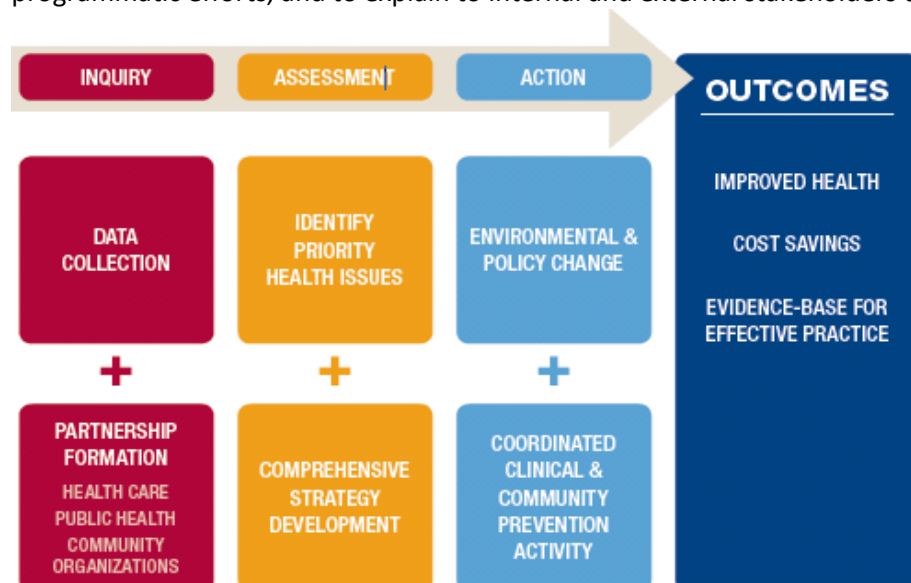
Davie Medical Center has a long history of engaging our communities in identifying health issues and implementing strategies to address the needs of the community. Ongoing, unprecedented increases in the demand for healthcare are challenging for communities and healthcare providers in this era of limited fiscal resources. In order to fulfill our mission and the requirements of the Affordable Healthcare Act for non-profit hospitals, Davie Medical Center has conducted its third needs assessment for the fiscal year 2020-2022 timeframe. This assessment is central to Davie Medical Center's community benefit/social accountability plan. By determining and examining the service needs and gaps in our community, Davie Medical Center can develop responses to address them through our community benefit plan and resources.

With the growing burden of chronic disease, the medical and public health communities are reexamining their roles and opportunities for more effective prevention and clinical interventions. The potential to significantly improve chronic disease prevention and impact morbidity and mortality from chronic conditions is enhanced by adopting strategies that incorporate a social ecology and place based perspective, realigning the patient-physician relationship, integrating population health perspectives into the chronic care model, and effectively engaging communities.

A Community Health Needs Assessment (CHNA) is an approach to collecting, analyzing and using data, including community input, to identify barriers to the health and wellbeing of its residents and communities leading to the development of goals and targeted action plans to achieve those goals. To undertake this mandate, Wake Forest Baptist Health formed an internal Community Benefit Steering Committee with representation from various departments and disciplines. Specifically, the Committee was charged to:

- Develop a comprehensive needs assessment and align with the WFBH's Strategic Plan
- Develop an implementation plan
- Monitor plan implementation and institute corrective measures if needed
- Evaluate the effectiveness of individual projects and the impact of community benefit initiatives as a whole
- Communicate the plan to external and internal audiences

The Community Benefit Steering Committee recommended using the following model to guide planning and programmatic efforts, and to explain to internal and external stakeholders the rationale for the Community.



### III. Description of Community Served and How it was Determined

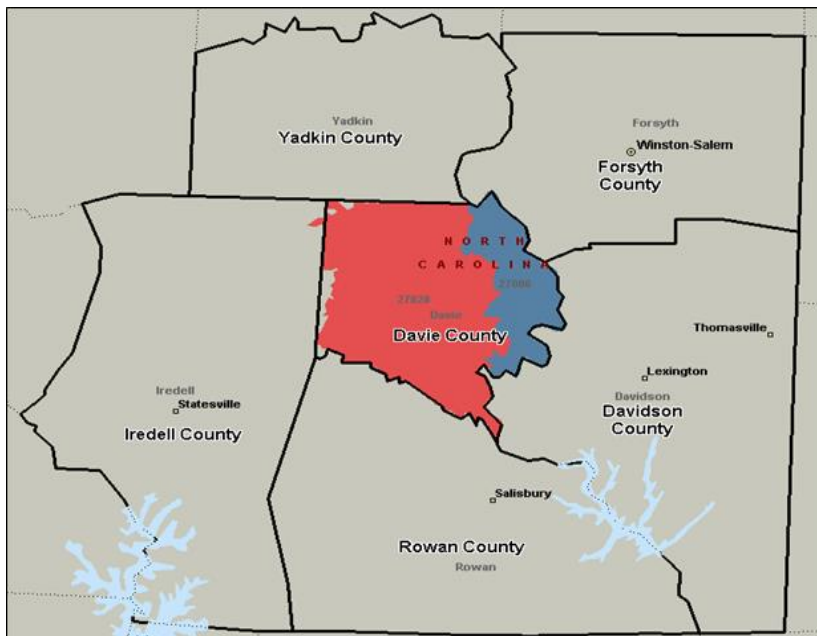
#### Community Profile

Davie County is located in the Piedmont Triad region of North Carolina. Widely rural, the county is characterized by rolling farmland. The nearest metropolitan area is Winston-Salem, located just 12 miles to the northeast. Davie County is bounded on the north by Yadkin County, on the northeast by Forsyth County, on the west by Iredell County, on the southeast by Davidson County and on the south by Rowan County. There are seven townships in Davie County. Mocksville is by far the largest municipality with 5,271 residents<sup>1</sup> and is also the county seat. Approximately 70% of the county's population is contained within rural areas of the County<sup>2</sup>. Davie County is bisected by Interstate 40, with Interstates 85 and 77 minutes away. This provides convenient access to Greensboro, Charlotte and Raleigh - just 34, 40, and 98 miles away, respectively. Approximately 61% of working Davie County residents travel outside the county to their employer on a daily basis<sup>3</sup>.

Davie County covers approximately 265 square miles and has a population of approximately 42,500, or 156 residents per square mile<sup>4</sup>. Davie County experienced growth approximating 3% annually between 2010 to 2017. Davie County is primarily comprised of three zip codes: 27028, 27006, and 27014 (PO Box).

Approximately 51% of Davie County's population is female. The majority of the County's population is white (84%)<sup>4</sup>. 42% of Davie County's population is between the ages of 20 to 54 years and 33% is over the age of 55.

Approximately 86% of the population is a high school graduate or higher with 24% of the population earning a bachelor's degree or higher. The drop-out rate in Davie County is 14.9%<sup>5</sup>. Most of the County's residents work in private industry. The median household income in Davie County as of 2016 was \$51,662 with approximately 11.6% at or below the poverty level.<sup>4</sup>



<sup>1</sup> <http://www.census.gov/quickfacts/table/mocksvilletownnorthcarolina,daviecountynorthcarolina/PST045217>

<sup>2</sup> [http://www.city-data.com/county/Davie\\_County-NC.html](http://www.city-data.com/county/Davie_County-NC.html)

<sup>3</sup> <https://accessnc.ncommerce.com/DemoGraphicsReports/pdfs/countyProfile/NC/37059.pdf>

<sup>4</sup> <https://www.census.gov/quickfacts/fact/table/daviecountynorthcarolina,US/PST045217>

<sup>5</sup> <https://files.nc.gov/ncosbm/demog/CountyEstimatesOverview2016.pdf>

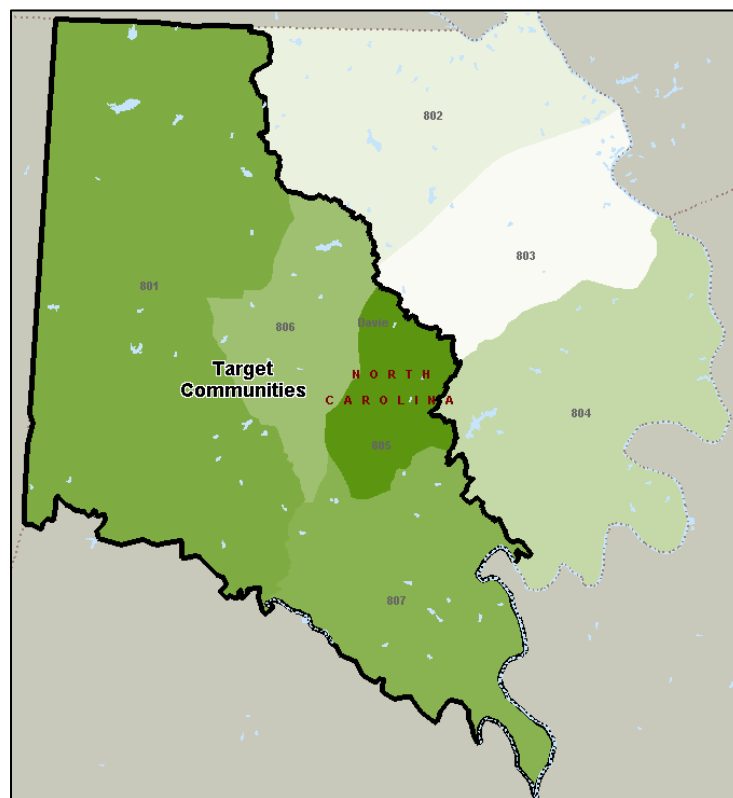
Davie Medical Center – Bermuda Run is located in eastern Davie County, North Carolina. The Emergency Department at Davie Medical Center – Bermuda Run had approximately 17,000 visits during its fiscal year ending 6/30/18 (FY18), of which approximately 51.5% originated from Davie County. Forsyth and Yadkin Counties rounded out another approximate 34% of ED visits. Within Davie County, the majority of the ED visits (approximately 67%) originated from zip code 27028 which also comprised approximately 35% of total ED visits. During FY18, Davie Medical Center had 2,861 patient days and 1,504 inpatient admissions.

Outpatient surgeries at Davie Medical Center – Bermuda Run totaled approximately 3,350 during FY18. Of those cases, over 80% originated from eight counties: Forsyth, Davie, Guilford, Davidson, Stokes, Surry, Yadkin, and Wilkes. Davie County accounted for approximately 13% of outpatient surgeries, with the distribution more or less evenly split between zip codes 27028 and 27006.

In order to allocate resources and maximize the effectiveness of community initiatives, for the purpose of conducting the Community Health Needs Assessment, Davie Medical Center chose to narrow the focus to Davie County as well as neighborhoods that:

- Are geographically proximate to Davie Medical Center
- Have a density of high-risk patients who demonstrate poor health indicators (health disparities)
- Have individuals and organizations with developed and historical relationships with Davie Medical Center (such as FaithHealth and United Way) partner to address specific health and social issues

As indicated in the map (below), these communities include Census Tracts 801, 805, 806, and 807.



Neighborhood resources, ethnic diversity and access to affordable care within Davie County pose formidable organizational challenges in community benefit programming. DMC's approach to community benefit adopts a comprehensive notion of health determinants that are spread across domains of behavioral risk, social and economic circumstances, environmental exposures, and medical care. The balance and effects of many of these determinants, e.g., availability of healthy foods, parks and other safe places to play and exercise, exposure to environmental irritants, and safe housing, are specific to Davie County and are built into the Community Benefit Plan.

#### IV. Process and Methods Used to Conduct the CHNA

Davie Medical Center worked closely with the Davie County Health Department to gain insight on the health needs of the community. Davie Medical Center was part of Davie County Health Department's community health assessment team that collaboratively created the Health Department's community health assessment process and report. The Health Department's Community Health Assessment is the result of efforts to assess the health needs of Davie County, as required at least every four years by the North Carolina Department of Health & Human Services. The purpose of the Community Health Assessment is to provide an understanding of the current health status and needs of Davie County, along with community strengths, assets and potential resources to address those needs.

#### Principles of Community Engagement:

Principle	Key elements
Set Goals	<ul style="list-style-type: none"> <li>• Clarify the purposes/goals of the engagement effort</li> <li>• Specify populations and/or communities</li> </ul>
Study Community	<ul style="list-style-type: none"> <li>• Economic conditions</li> <li>• Political structures</li> <li>• Norms and values</li> <li>• Demographic trends</li> <li>• History</li> <li>• Experience with engagement efforts</li> <li>• Perceptions of those initiating the engagement activities</li> </ul>
Build Trust	<ul style="list-style-type: none"> <li>• Establish relationships</li> <li>• Work with the formal and informal leadership</li> <li>• Seek commitment from community organizations and leaders</li> <li>• Create processes for mobilizing the community</li> </ul>
Encourage self-determination	<ul style="list-style-type: none"> <li>• Community self-determination is the responsibility and right of all people</li> <li>• No external entity should assume that it can bestow on a community the power to act in its own self-interest</li> </ul>

Principle	Key elements
Establish partnerships	<ul style="list-style-type: none"> <li>• Equitable partnerships are necessary for success</li> </ul>
Respect diversity	<ul style="list-style-type: none"> <li>• Utilize multiple engagement strategies</li> <li>• Explicitly recognize cultural influences</li> </ul>
Identify community assets and develop capacity	<ul style="list-style-type: none"> <li>• View community structures as resources for change and action</li> <li>• Provide experts and resources to assist with analysis, decision-making, and action</li> <li>• Provide support to develop leadership training, meeting facilitation, skill building</li> </ul>
Release control to the community	<ul style="list-style-type: none"> <li>• Include as many elements of a community as possible</li> <li>• Adapt to meet changing needs and growth</li> </ul>
Make a long-term commitment	<ul style="list-style-type: none"> <li>• Recognize different stages of development and Provide ongoing technical assistance</li> </ul>

Source: Principles of Community Engagement: Edition 2. Clinical and Translational Science Awards Consortium Community Engagement Key Function Committee Task Force on the Principles of Community Engagement. 2011;11-778<sup>8</sup>.

## Literature Review and Secondary Data Sources:

Other secondary data sources were reviewed including:

1. Wake Forest Baptist Medical Center Community Dashboard/Healthy Communities Institute: <http://www.wakehealth.edu/HCI/?hcn=CommunityDashboard>
2. County Health Rankings and Roadmaps: <http://www.countyhealthrankings.org/>
3. 2016 State of the County Health: <https://www.daviecountync.gov/679/State-of-the-County-Report>
4. US Census Bureau 2010 Census (2017 estimates)
5. NC Center for Health Statistics/LINC
6. Healthy Davie initiative - <https://www.myhealthydavie.org>
7. Healthy People 2020
8. Healthy North Carolina 2020
9. Center for Medicare and Medicaid – Health Outcomes Survey <https://hosonline.org/>

## Primary Data Sources:

### Wake Forest Baptist Health (WFBH) Strategic Plan

The WFBH 3-Year Strategic Plan was reviewed and potential areas of alignment with community benefit strategies were identified.

### Community Input – Resident Surveys (conducted by Davie County Health Department)

The Davie County Community Health Assessment Survey was conducted during 2017. The CHA team determined that survey dissemination and collection would be most effectively and efficiently completed through clients, contacts and staff of agencies with the county, as well as those represented on the CHA team (representatives of Davie County Health Dept., Davie County Schools, Davie County Senior Services, Novant Health, Wake Forest Baptist Health, Davie Community Foundation, Davie County Cooperative Extension, Davie YMCA and Town leaders).

Approximately 670 Davie County residents completed a questionnaire regarding their health status, health behaviors, and factors that impact their quality of life. The Davie County Health Department's community health survey tool was created on Survey Monkey and residents could choose to complete the survey on-line or on paper. Surveys were emailed or hand delivered to service agencies and organizations within the County. For the Spanish-speaking community, the community health survey was translated to Spanish and disseminated through the Davie County Health Department and through Saint Francis Assisi Catholic Church, where interpreter services were provided.

The Health Department's community health assessment was a collective and collaborative effort. In addition to the survey, the Davie County Health Department partnered with representatives from local government departments, nonprofit agencies and organization and major health systems through the Healthy Davie initiative. This initiative encourages communication and collaboration among the agencies and organizations to positively impact areas of education, poverty and wellness to achieve a "healthy community" status.

Based on the primary and secondary data and identified recurring issues, the CHA team chose the following three priorities to protect and improve the lives and health of Davie County residents:

1. Chronic disease management
2. Drug misuse and abuse prevention and education
3. Access to affordable care

## **FaithHealthNC Community Asset Mapping**

FaithHealth NC held two workshops in Davie County in 2016 comprised of people and organizations providing religious, health and social services in the community.

By working with the two groups, health seeker and health provider groups, participants identified the most important factors contributing and working against health in the community. Providers identified how partnerships and resources could contribute to improve health. Key findings in these work groups included:

Food insecurities, inadequate emergency care, schools are a main source for offering services to families and are major advocates for children, and the hospital and community college are partnering to provide services. In addition, the groups identified that services are concentrated in Mocksville and many cannot access this care. Poorer neighborhoods seemed to be neglected. Dental care, transportation and housing needs for the homeless are key issues. Lack of transportation, lack of finances, proximity to healthcare and depression are factors that work against the well-being in the community.

From these meetings, next steps were identified primarily focusing on transportation and other access to care issues.

### **Community Input – Resident Surveys (conducted by Davie Aging Services Planning Committee)**

The Davie County Aging Plan Survey was conducted in 2018 by the Davie Aging Planning Committee/Davie County Senior Services. The goal of the survey is to create a 2019-2024 comprehensive aging plan for Davie County that supports its aging population and improve the quality of life for everyone in Davie County. Six facilitator led meetings were held in October 2018 to discuss: (1) what the County is doing well; and (2) what opportunities exist for improvement. Representatives from Davie Medical Center were on the Davie Aging Planning Committee.

The two main questions of the survey were: (1) what concerns you most about aging; and (2) how well is Davie County doing to address important issues regarding aging. Of the participants taking the survey, 85% were 55 or older, 66% were women, 90% were white and 58% had household income of \$50,000 or greater. Based on the survey results, the biggest life issues identified were declining health/major illness, managing chronic illness, running out of money, losing the ability to take care of their home, getting dementia and not being able to afford necessities (food, medicine, housing, and health care). The most identified opportunities to improve upon included: home repairs for those who can't afford them, affordable housing, dental services and safe sidewalks.

### **Comments from 2017-2019 CHNA**

All CHNA and Implementation reports along with county indicator tracking are available on the WFBH website - <http://www.wakehealth.edu/HCI/> and <http://www.wakehealth.edu/Davie-Medical-Center/About/Community-Benefits/Community-Benefits.htm>. No comments from the public have been received to date. All future comments will be incorporated into future CHNA and implementation strategies and reports.

## **V. Identification and Prioritization of Community Health Need**

To address the community health needs identified in the CHNA, recommendations for initiatives were prioritized based on secondary data findings, primary data gathered through FaithHealthNC workshops, Davie County Health Department community health assessment and survey findings, the Davie Aging Services Planning survey

findings and the feedback from the WFBH CHNA steering committee and senior leadership. The identified priority health needs and recommended initiatives were then grouped into the following four domains:

- Access to care
- Chronic disease management and prevention
- Behavioral health and substance dependency
- Maternal and child health

The following prioritization criteria and weighting was used to identify community benefit priorities:

Criteria	Weighted Value
Identified as a county priority	2
Disparity exists within census tract/zip code/county/market	3
WFBH steering/leadership perceive as a priority	2
Great potential to improve health status	3
Positive visibility for WFBH	1
High # of patients/residents can/would be impacted	2
Feasibility/resources availability /existing relationships	2
Supports WFBH Strategic Plan objectives	2
Synergy with current supported initiatives- FaithHealthNC, United Way	2
Coordinates/complements with County Health Department assessment priorities	1
<b>Total points</b>	<b>20</b>

A strategic framework was also developed with the ultimate goal of community engagement for DMC, which includes guiding principles for addressing the conditions/priorities that influence the health of communities and contribute to better health of the population served.

### Guiding Principles

- **Focus on the places where need is concentrated.** Health in targeted neighborhoods served focusing on obesity, diabetes, healthy eating, exercise, and working with nutritious foods
- **Tighten Social Service, Faith and Other Agency partnerships.** Support/sustain/enhance community resource agencies that care for the social and behavioral health needs of our patients and residents. This includes Southside FQHC, United Way Funded Agencies, Second Harvest Food Bank and the many hundreds of faith groups already involved in the lives of our patients and neighborhoods.
- **Strengthen patients and partners through health education and literacy focus.** Programs and initiatives provide the opportunity to build the capacity of patients and community members to blend the very best of health science with their own intelligence and wisdom to make the choices that advance health of themselves and those they love.

The Community Benefit steering committee along with the Executive Team developed the final priorities which are summarized in the table below.

Domain	Priority Health Areas to Address
Access to Care	Decrease ED Utilization for uninsured/charity care patients



Access to Care	Increase WFBH patients with health insurance /usual source of care
Access to Care	Increase WFBH patients with access to transportation to clinic appointments
Access to Care	Increase primary care access points in vulnerable communities
Chronic Disease Management & Prevention	Healthy Lifestyle Behaviors and Community Environment - screenings, exercise promotion and healthy living classes
Chronic Disease Management & Prevention	Increase self-management education opportunities for patients and residents with chronic disease
Chronic Disease Management & Prevention	Increase primary care group visits for diabetic and obesity patients
Chronic Disease Management & Prevention	Increase patients and Wake employees enrolled in chronic care management programs
Chronic Disease Management & Prevention	Health Screening and Early Detection: Provide Mammography/Women's Cancer community screenings
Behavioral Health and Substance Abuse	Implement a new program, Sources of Strength, a peer based suicide initiative, at Davie County middle and high schools
Behavioral Health and Substance Abuse	Decrease ED Utilization for behavioral health related conditions, including substance abuse
Maternal and Child Health	Increase education for women on the benefits of good pre-conception health and early prenatal care

Given the high level of charity care, percent below poverty and number of co-morbidities as noted in the Wake Chronic Disease Registry data for obesity, diabetes, and hypertension, the following census tracts were prioritized for place based/community impact: 801, 805, 806, and 807.

## VI. Davie County Community Resources to Address Needs

Public Services			
<b>Transportation</b>			
PART Transportation			336-883-7278
YVEDDI Transportation	622 North Main Church Road	Mocksville, NC 27028	336-751-2187
<b>County Services</b>			
Davie County Senior Services	278 Meroney Street	Mocksville, NC 27028	336-753-6230
Davie County Department of Social Services	228 Hospital Street	Mocksville, NC 27028	336-751-8800
Davie County Public Library	7796 NC 801	Cooleemee, NC 27014	336-284-2805
Davie County Public Library	371 North Main Street	Mocksville, NC 27028	336-753-6030
Domestic Violence and Rape Crisis Center	123 South Main Street	Mocksville, NC 27028	336-751-4357
Davie Detention Center	135 Green Street	Mocksville, NC 27028	336-753-6645
Cooperative Extension- Davie County	180 South Main Street	Mocksville, NC 27028	336-753-6100

Buckle Up Davie (Car Seat Program)	210 Hospital Street	Mocksville, NC 27028	336-753-6750
Davie County Parks and Recreation	644 North Main Street	Mocksville, NC 27028	336-753-2325
Department of Veteran's Services	277 Meroney St.	Mocksville, NC 27028	336-753-6225
Cooleemee Police Dept.	114 Duke Street	Cooleemee, NC 27014	336-284-4098
Davie County Elections	161 Poplar Street Suite 102		336-753-6072
Davie Chamber of Commerce	135 South Salisbury Street	Mocksville, NC 27028	336-751-3304
Davie County Government	123 South Main Street	Mocksville, NC 27028	336-753-6001
Davie County Public Utilities	298 East Depot Street	Mocksville, NC 27028	336-753-6090
Davie County Register of Deeds	123 South Main Street	Mocksville, NC 27028	336-753-6080

### General Services

Just Hope	643 Wilkesboro Street	Mocksville, NC 27028	336-909-4241
Storehouse for Jesus	675 East Lexington Road	Mocksville, NC 27028	336-753-1431
Smart Start of Davie County	1278 Yadkinville Road	Mocksville, NC 27028	336-751-2113
Head Start	819 Dulin Road	Mocksville, NC 27028	336-998-1831
Head Start	7131 NC Hwy 801	Mocksville, NC 27028	336-284-6066
Davie Pregnancy Center	491 Madison Road	Mocksville, NC 27028	336-753-4673
Davie Community Fdn	107 North Salisbury Street	Mocksville, NC 27028	336-753-6903
Unemployment Office and Career Center	375 Hospital St. Suite 101	Mocksville, NC 27028	336-751-3315
Mebane Foundation	232 South Main Street	Mocksville, NC 27028	336-936-0041

### Churches

Chinquion Grove Baptist Church	4462 NC Hwy 801 North	Mocksville, NC 27028	336-998-3362
Cornerstone Christian Church	1585 Hwy 801	Mocksville, NC 27028	336-998-0600
Evangelical Church	819 Greenhill Road	Mocksville, NC 27028	336-492-2869
Jericho Church of Christ	124 Davie Academy Road	Mocksville, NC 27028	336-492-5291
Journey of Faith Church of Christ	124 Wilkesboro Street	Mocksville, NC 27028	336-753-1390
Liberty AME Zion Church		Mocksville, NC 27028	336-284-2508
Life Community Church	170 Duard Reavis Road	Mocksville, NC 27028	336-492-6512
Mainville AME Zion Church	165 Main Church Road	Mocksville, NC 27028	336-751-9146
Mocks United Methodist Church	523 Beauchamp Road	Advance, NC 27006	336-998-1335
New Jerusalem Apostolic	291 Campbell Road PO Box 334	Mocksville, NC 27028	336-751-0049
Mt Sinai AME Zion Church	482 Peoples Creek Road	Advance, NC 27006	336-998-6231

Smith Grove AME Zion	3707 US Hwy 158	Mocksville, NC 27028	336-998-9544
RefugeCommunityChurch	137 Marginal Street	Cooleemee, NC 27014	336-284-2278
The Episcopal Church of the Ascension at Fork	183 Fork Bixby Road	Advance, NC 27006	336-998-0857
Advance First Baptist Church	1938 NC Hwy 801 South	Advance, NC 27006	336-998-6302
Bear Creek Baptist Church	492 Bear Creek Church Road	Mocksville, NC 27028	336-492-7456
Blaise Baptist Church	134 Blaise Church Road	Mocksville, NC 27028	336-751-3639
Boxwood Baptist Church	299 Boxwood Baptist Church Road	Mocksville, NC 27028	336-284-4360
Bread of Life Baptist Church	4557 NC Hwy 801 North	Mocksville, NC 27028	336-998-6390
Calahaln Friendship Baptist Church	470 Calahaln Road	Mocksville, NC 27028	336-492-2266
Calvary Baptist Church	2165 Davie Academy Road	Mocksville, NC 27028	336-492-5334
Calvary Baptist Church	1663 US Hwy 601 South	Mocksville, NC 27028	336-751-6300
Calvary Baptist Church	155 Commerce Drive	Advance, NC 27006	336-998-1489
Cedar Creek Baptist Church	711 Cedar Creek Road	Mocksville, NC 27028	336-998-8191
Cedar Grove Baptist Church	307 Cedar Creek Church Road	Mocksville, NC 27028	336-940-5632
Community Baptist Church	612 Gladstone Road	Mocksville, NC 27028	336-284-2779
Cornatzer Baptist Church	1372 Cornatzer Road	Mocksville, NC 27028	336-998-4399
Davie Baptist Church	1489 Fork Bixby Road	Advance, NC 27006	336-998-2771
Dutchman Creek Baptist Church	5723 NC Hwy 801 South	Mocksville, NC 27028	336-998-8855
Eaton Baptist Church	430 Eaton's Church Road	Mocksville, NC 27028	336-998-3746
Fairfield Baptist Church	164 Excalibur Lane	Mocksville, NC 27028	336-751-0169
Farmington Baptist Church	1835 Farmington Road	Mocksville, NC 27028	336-998-3826
Fellowship Baptist Church	1084 Rainbow Road	Advance, NC 27006	336-998-6544
First Baptist Church	412 North Main Street	Mocksville, NC 27028	336-751-5312

#### Churches

Fork Baptist Church	3140 US Hwy 64 East	Mocksville, NC 27028	336-998-8306
Freedom Baptist Church of Davie County	118 Cornatzer Road	Mocksville, NC 27028	336-998-5294
Greater Mt Moriah Missionary Baptist Church	2076 US Hwy 601 South	Mocksville, NC 27028	336-753-1273
Hillsdale Baptist Church	4815 US Hwy 158	Advance, NC 27006	336-940-6618
Hope Baptist Tabernacle	2408 US Hwy 158	Mocksville, NC 27028	336-998-3616
I James Baptist Church	1038 I James Church Road	Mocksville, NC 27028	336-492-5265
Jerusalem Baptist Church	3203 US Hwy 601 South	Mocksville, NC 27028	336-284-2328
New Bethel Baptist Church	585 Boxwood Church Road	Mocksville, NC 27028	336-284-2990
New Shepard Baptist Church	108 Wall Street	Cooleemee, NC 27014	336-284-4143
Shiloh Baptist Church	544 East Depot Street	Mocksville, NC 27028	336-751-0597

YadkinValleyBaptistChurch	1324 Yadkin Valley Road	Advance, NC 27006	336-998-7230
Edgewood BaptistChurch	7483 NC Hwy 801 South	Mocksville, NC 27028	336-284-2593
First Baptist Church	284 Marginal Street	Cooleemee, NC 27014	336-284-2626
Green Meadows Baptist Church	1646 NC Hwy 801 North	Mocksville, NC 27028	336-998-3022
St Frances of Assisi Catholic Church	862 Yadkinville Road	Mocksville, NC 27028	336-751-2973
North Main Church of Christ	605 North Main Street	Mocksville, NC 27028	336-751-2866
Redland Church of Christ	4302 US Hwy 158	Advance, NC 27006	336-998-3918
Christ Temple Church of God		Advance, NC 27006	336-998-3959
Mocksville Church of God	862 US Hwy 64 East	Mocksville, NC 27028	336-751-0817
Clement Grove Church of God	159 Parker Road	Mocksville, NC 27028	336-492-5125
Church of God Prophecy NC Hwy	601 South	Mocksville, NC 27028	336-284-2935
Holy Cross Lutheran Church	1913 US Hwy 601 South	Mocksville, NC 27028	336-751-5419
Advance Methodist Church	1911 NC Hwy 801 South	Advance, NC 27006	336-998-0199
Center United Methodist Church	728 Wilkesboro Street	Mocksville, NC 27028	336-492-5853
Chestnut Grove United Methodist Church	2812 US Hwy 601 North	Mocksville, NC 27028	336-492-5659
Dulin United Methodist Church	897 Dulin Road	Mocksville, NC 27028	336-998-5409
Elbaville United Methodist Church	2595 NC Hwy 801 South	Advance, NC 27006	336-998-6111
Farmington Methodist Church	1939 Farmington Road	Mocksville, NC 27028	336-998-7550
Fulton United Methodist Church	3689 NC Hwy 810 South	Advance, NC 27006	336-998-8117
Hardison United Methodist Church	1630 Jericho Church Road	Mocksville, NC 27028	336-751-5630

#### Schools

Davie County High School	180 War Eagle Drive	Mocksville, NC 27028	336-751-5905
Early College	1211 Salisbury Road	Mocksville, NC 27028	336-753-0888
Central Davie Academy	Martin Luther King Junior Rd.	Mocksville, NC 27028	336-751-5712
South Davie Middle School	700 Hardison Street	Mocksville, NC 27028	336-751-5941
North Davie Middle School	497 Farmington Road	Mocksville, NC 27028	336-998-5555
William Ellis Middle School	144 William Ellis Drive	Advance, NC 27006	336-998-2007
Pinebrook Elementary	477 Pinebrook School Road	Mocksville, NC 27028	336-998-3868
Shady Grove Elementary	3179 Cornatzer Road	Advance, NC 27006	336-998-4719
William R. Davie Elementary	3437 US Hwy 601 N	Mocksville, NC 27028	336-492-5421

Cooleemee Elementary	136 Marginal Street	Cooleemee, NC 27014	336-284-2581
Cornatzer Elementary	552 Cornatzer Road	Mocksville, NC 27028	336-940-5097
Mocksville Elementary	295 Cemetery Street	Mocksville, NC 27028	336-751-2740
<b>Behavioral, Dental &amp; Medical Resources</b>			
Storehouse for Jesus	675 East Lexington Road	Mocksville, NC 27028	336-753-1431
Alcoholics Anonymous	310 North Main St.	Mocksville, NC 27028	336-751-2503
Davie Medical Center	329 NC Hwy 801 North	Bermuda Run, NC 27006	336-998-1300
Diabetes Management Program	210 Hospital Street	Mocksville, NC 27028	336-753-6178
Rescue Squad	112 Westside Drive	Mocksville, NC 27028	336-751-0808
Hospice & Palliative Care	377 Hospital Street Suite 103	Mocksville, NC 27028	336-753-0212
The Nest Family Counseling	172 S. Clement Street Suite 1	Mocksville, NC 27028	336-753-6440
RHA Behavioral Health	119 West Depot St	Mocksville, NC 27028	336-751-5636
Cardinal Innovations Wellness Center	142 Gaither Street	Mocksville, NC 27028	336-778-3658
Davie Dermatology	108 Dornach Way	Advance, NC 27006	336-940-2407
Advance Pediatrics	114 Kinderton Blvd.	Advance, NC 27006	336-998-9742
Digestive Health	112 Kinderton Blvd. Suite 100	Advance, NC 27006	336-768-6211
Family Care Center	101 Wilkesboro Street	Mocksville, NC 27028	336-753-0800
Hillsdale Family Practice	P.O. Box 259	Advance, NC 27006	336-713-2290
Davie Medical Associates	485 Valley Road	Mocksville, NC 27028	336-751-8000
Medical Associates of Davie at Hillsdale	121 Medical Drive	Advance, NC 27006	336-998-9060
Mocksville Pediatrics	113 Market Place Drive	Mocksville, NC 27028	336-753-8244
Piedmont Healthcare	375 Hospital Street	Mocksville, NC 27028	336-751-2121
Marlin Chiropractic	854 Valley Road Suite 200	Mocksville, NC 27028	336-753-1447
Davie Chiropractic Clinic	501 Wilkesboro Street	Mocksville, NC 27028	336-751-2512
Corvan Chiropractic	375 Hospital Street Suite 100	Mocksville, NC 27028	336-753-0056
Wake Forest Baptist Health-Urgent Care	1188 Yadkinville Road	Mocksville, NC 27028	336-713-0555
CareNet Counseling	412 N Main Street	Mocksville, NC 27028	336-751-2041
Dragonfly House	387 Valley Road	Mocksville, NC 27028	336-753-6155
<b>Pharmacy</b>			
CVS Pharmacy	110 NC Hwy 801 North	Advance, NC 27006	336-940-6870
Davie Discount Drug	141 Marginal Street	Cooleemee, NC 27014	336-284-2537
Foster Drug Company	495 Valley Road	Mocksville, NC 27028	336-751-2141
Rite Aid Pharmacy	260 NC Hwy 801 N	Advance, NC 27006	336-998-6434
Walgreens Drug Store	5322 US Hwy 158	Advance, NC 27006	336-940-5515

Walmart Pharmacy	261 Cooper Creek Drive	Mocksville, NC 27028	336-751-1340
DMC Bermuda Run Pharmacy	329 NC Highway 801 N	Bermuda Run, NC 27006	336-998-1030
Walgreens Pharmacy	901 Yadkinville Road	Mocksville, NC 27028	336-751-2499
<b>Vision</b>			
Walmart Vision Center	261 Cooper Creek Drive	Mocksville, NC 27028	336-751-2890
Carolina Center for Eye Care	5380 US Hwy 158 Suite100	Advance, NC 27006	336-940-2015
Mocksville Vision Center	198-B Hospital Street	Mocksville, NC 27028	336-751-5734
Ronald Gantt, OD	101 Wilkesboro Street	Mocksville, NC 27028	336-751-2726
<b>Dental</b>			
Kevin Armbrecht, DDS	330 Hospital Street	Mocksville, NC 27028	336-751-6291
Jeffrey Billings, DDS	145 Marginal Street	Cooleemee, NC 27014	336-284-2595
Jeffrey Billings, DDS	188 Hospital Street	Mocksville, NC 27028	336-751-3305
Thomas Browder, DDS	5380 US Hwy 158 Suite 200	Advance, NC 27006	336-998-9988
Todd Carter, DDS	123 NC Hwy 801 S, Suite C-100	Advance, NC 27006	336-940-2342
Hillsdale Dental	127 Royal Troon Lane	Advance, NC 27006	336-998-2427
Family Dentistry	Hwy 801 & Yadkin Valley Road	Advance, NC 27006	336-998-1076
Paul Mighion, DDS	198 Hospital Street	Mocksville, NC 27028	336-751-2364
Southern Dental Associates	135 Medical Drive	Advance, NC 27006	336-998-5437
Rivers Family and Cosmetic Dentistry	118 Hospital Street	Mocksville, NC 27028	336-751-6289
Mocksville Family Dentistry	113 Marketplace Drive	Mocksville, NC 27028	336-753-6630
<b>Exercise / Wellness</b>			
Davie Family YMCA	295 Cemetery Street	Mocksville, NC 27028	336-751-9622
Gym 365	377 Hospital Street	Mocksville, NC 27028	336-753-6365
Gym 365	5403 US Hwy 158	Advance, NC 27006	336-998-6365

<b>Assisted Living / Skilled Facilities / Group Homes</b>			
Autumn Care	1007 Howard Street	Mocksville, NC 27028	336-751-3535
Bermuda Commons Nursing & Rehabilitation	316 NC Hwy 801 South	Advance, NC 27006	336-998-0240
Mocksville Senior Living	337 Hospital Street	Mocksville, NC 27028	336-751-2175
Milling Manor	253 Milling Road	Mocksville, NC 27028	336-751-3276
Somerset	150 Ken Dwiggin Drive	Mocksville, NC 27028	336-751-1209
Magnolia Place	270 Duke Street	Mocksville, NC 27028	336-936-9356
Cedar Rock Assisted Living	181 Polaris Drive	Mocksville, NC 27028	336-753-1042
Heritage of Cedar Rock	191 Crestview Drive	Mocksville, NC 27028	336-751-1515
Bermuda Village	142 Bermuda Village Drive	Advance, NC 27006	336-998-6112
Davie County Group Home	785 Sanford Ave	Mocksville, NC 27028	336-751-5004

## VII. Progress to Date on 2017-2019 Priorities

The following tables below provide detailed updates of the 2017-2019 CHNA priority progress.

### 1) Educate the Davie community on the principles of proper nutrition and physical activity

Description	FY 17, 18, 19
Best Health Classes provided at Davie Medical Center focused on cooking, nutrition and healthy living	23 classes with topics on health, exercise and nutrition
Twin City Soccer Association Partnership	Providing medical kits & CPR training to staff & coaches and education on proper nutrition, conditioning & injury prevention to parents and children. Sponsored walking trails & a playground at TCSA's soccer complex to provide opportunities for community exercise.
Healthy Davie Initiative	Support for 1,000,000,000 Step Challenge for Davie County
Davie Medical Center Path to Wellness; Walktober Challenge	Walking Trails from ¼ mile to 1 mile on the Davie Campus; Challenge to walk 31 minutes for 31 days.

### 2) Offer programs & screenings to help residents lower their risk for chronic disease

Description	FY 17, 18, 19
Healthy Davie Initiative	Representatives on the Healthy Davie Initiative self-sufficiency & wellness sub groups that provide health care education and materials to Davie County residents.
Davie County Chamber of Commerce	Provide free health screenings and healthy lifestyle education at their annual For Your Health Expo.
NC Med Assist Program	Provide free health screenings, educational materials and over the counter medicines to Davie County residents during their mobile pharmacy program.
Best Health educational classes	8 Health related educational classes on subjects such as brain aneurysms, headaches, pain, eye health, strokes, joint pain, safe sitter basics and other health related topics.

### 3) Access to care

Description	FY 17, 18, 19
FaithHealth NC Connectors	Serve a critical role in helping Davie County residents with transportation to their medical appointments and after Medical Center discharge. Since 2016, we added 2 health connectors and 14 volunteers that served over 2,100 persons in conjunction with 20 Davie County congregations.

Yveddi	Partner with Yveddi, a nonprofit community action agency that provides accessible, affordable and efficient transportation to Davie county residents.
Davie Medical Center – Bermuda Run	In 2017, DMC opened a new, 50 bed, inpatient, medical/surgical hospital at Bermuda Run. During FY 17 – FY 19, DMC added 11 new providers in Davie County, 2 new provider based clinics and space for a second CareNet location in Davie County.
Family Promise of Davie County & Storehouse for Jesus	Provide support for medical clinics at Storehouse for Jesus and Family Promise of Davie County. Working with a network of thirteen churches trained through FaithHealth to assist vulnerable Davie County residents with their health related needs (food, medicine, housing, transportation and clothing).

#### 4) Behavioral health

Description	FY 17, 18, 19
Caregiver Academy	90 minute, free classes offered at Davie Medical Center that offer education and support to prepare for caregiving and providing assistance to love ones. In addition to providing education, resources and tools on select caregiving topics, the classes provide a platform for questions, answers and information sharing. More than 23 classes will be held during FY17-FY19.
CareNet & FaithHealth ministries	Provide community education on mental health issues at various faith sponsored events and provide training to local clergy on spiritual and emotional wellness and support. Partner with CenterPoint and other agencies as a joint referral source for patients.
Sources of Strength	Introduced Sources of Strength, a best practice youth suicide prevention program to a Davie County middle school. The goal is to expand this program to all Davie County middle and high schools over the next 5 years. The program's mission is to prevent suicide by increasing help seeking behaviors and promoting connections between peers and caring adults.
CareNet	Added a second CareNet location in Davie County that provides traditional individual health counseling and integrated behavioral health.